

Spire Integrated Solutions manufactures the LYNX brand of Vivarium Washing equipment.



Cage & Rack Washer

Model 410RS

Customizable, hydro-spray washers designed for ease of use, minimal maintenance, and highest cleanability of caging, bottles, racks, debris pans, and other items.

Model	Standard Chamber Size <i>W x H x D</i>	Standard Unit Size <i>W x H x D</i>	Opt. Door Widths	Opt. Door Heights	Opt. Chamber Lengths
410RS	48" x 88" x 96"	88" x 95" x 98"-116"	36", 42", 46"	74", 82"	90", 100", 108"

Washers can be designed to any size to meet your application requirements.

Features

- Heavy-duty hinge door
- Heavy-duty stainless steel door with port view glass window.
- Modular construction
- Recirculated water is heated by a stainless steel steam coil to achieve guaranteed treatment temperatures.
- 10 HP treatment pump with a direct read pump pressure gauge.
- Knock-down shipment
- Rotating spray delivery system
- Personnel safety features
- Allen Bradley Controls MicroLogix PLC System
- Full color HMI touch screen
- 10 configurable cycles
- Automatic self-cleaning screen
- Temperature guarantee
- Insulated construction
- Incoming utility gauges
- Interior illumination
- SS recirculation piping and components
- Non-proprietary parts

Options

- Shallow Base Unit (6")
- Pit or Floor Mounted
- Pass-thru Unit
- Right or Left Hand Services
- Re-usable Throwaway Alkaline Tank
- House Hot Water Heat Exchanger
- Integral Data Collection System
- Drain Discharge Cooling
- Automatic Damper
- SS Exhaust Fan
- Low Steam Pressure Package
- Pass-thru Door Interlock System
- Air Compressor
- Printer
- Seismic Tie Down
- Detergent Dispensing Systems
- pH Neutralization System
- Feeder Bottle Washing System
- Automatic Water Rack Flush System
- Split Base for Special Entry
- Utility Enclosure Panels
- Inclined Floor Grating
- Barrier Wall Flange(s)

Accessories

- Floor Ramps
- Bottle Wash Cart
- Universal Cage Wash Cart
- High Capacity Cage Wash System

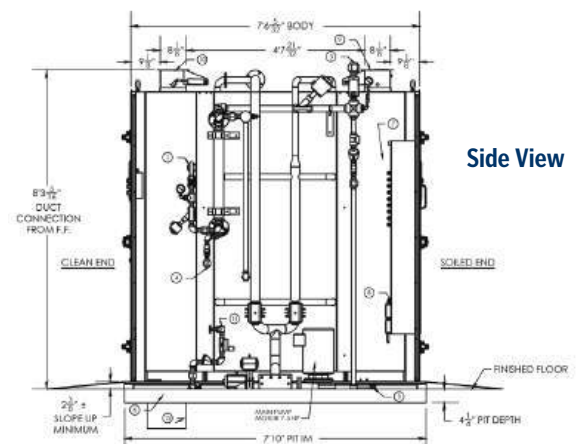
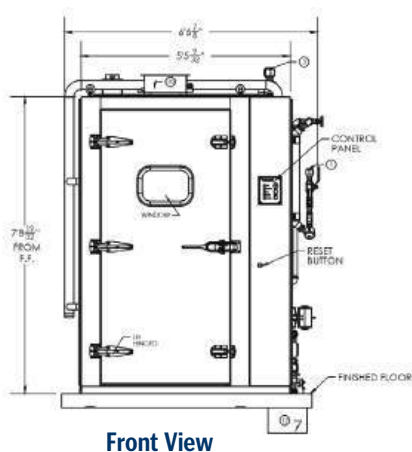
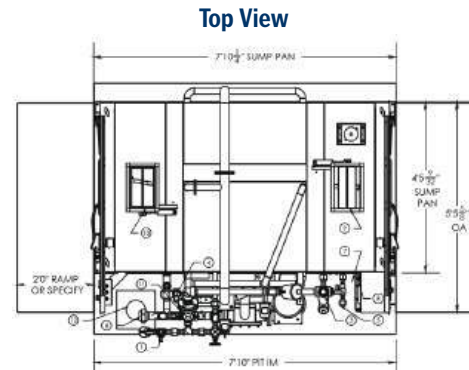
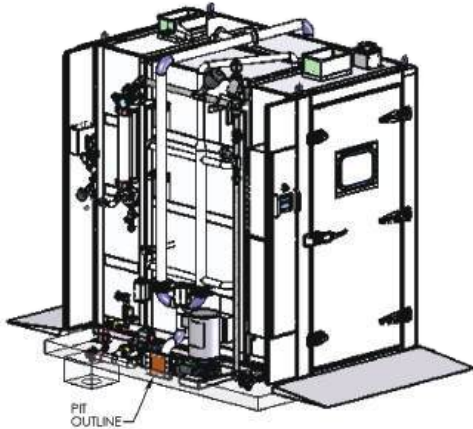
Construction

- Cabinet Construction - 16 ga 304 SS

Utilities

Electrical (E)	3-60-208/480/600V, 12HP
Hot Water (HW)	1" NPT, 35 PSI, 25 GPM @ 140° F ± 5° F (65 gallon sump capacity)
Cold Water (CW)*	1" NPT, 35 PSI, 25 GPM @ 50° F ± 5° F
Steam (S)	1½" NPT, 40-60 PSI, Dynamic ± 5 PSI, 450-600 #/Hr Flow Rate
Condensate (C)	¾" NPT
Air (A)	¼" NPT, 80-100 PSI, 1-2 CFM Flow Rate
Drain (D)	12" x 12" Floor Sink with 4" Floor Drain (<i>minimum</i>), 180 GPM Flow Rate
Vent (V)	8" x 13" Duct, Saturated Vapor @ 190° F, 1 DC (1200 CFM) + 1 IDC (500 CFM)

Drawings



Washers can be customized to any size to meet your application requirements.