

STORAGE FOR LABORATORIES

-80°C ULTRALOW FREEZERS



UNDER THE COUNTER AND UPRIGHT MODELS



A Kewaunee Company

NuAire, Inc. | NUAIRE.COM

WORLD-CLASS LABS DESERVE FIRST-IN-CLASS SOLUTIONS

Empower Your Research with Kewaunee and NuAire.



We are thrilled to share that NuAire is now a Kewaunee company. This partnership brings together two of the most renowned names in laboratory furnishings, combining world-class portfolios and nearly two centuries of shared expertise to create a powerhouse of innovation and customer-centered solutions.

Together, Kewaunee and NuAire offer a comprehensive range of laboratory-grade products that cater to the unique needs of diverse scientific spaces. From Kewaunee's nearly 120 years of experience producing superior lab furniture and fume hoods to NuAire's advanced biosafety cabinets and airflow products, we offer tailored solutions that meet the highest standards of quality, safety, and efficiency.

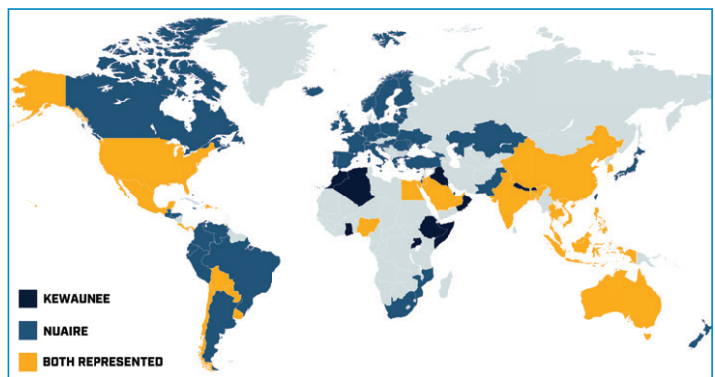
NuAire has over 50 years of experience designing and building airflow equipment and is a leading brand in the biocontainment industry. Founded by Max Peters in the early 1970s, NuAire products serve the needs of many industries including microbiological research, animal research, hospital pharmacy compounding, and more.



Kewaunee Headquarters
& USA Manufacturing Facilities: Statesville, North Carolina



NuAire Headquarters
& Manufacturing Facilities: Plymouth, Minnesota



Sales Partner Network

TOTAL LAB SOLUTIONS

A WORLD CLASS PARTNERSHIP

The partnership of Kewaunee Scientific and NuAire allows us to offer comprehensive laboratory equipment solutions and complete laboratory furniture infrastructure.



- Class II Biological Safety Cabinets
- Laminar Airflow Workstations
- Containment Ventilated Enclosures
- Restricted Access Barrier Systems
- CO₂ Incubators
- Ultra Low Temperature Freezers (via OEM)
- Animal Transfer Stations
- Animal Refuse Workstations
- Custom Lab Automation Enclosures



- Steel casework
- Wood casework
- Fume hoods & ventilated products
- Adaptable modular systems
- Moveable workstations
- Lab benches and tables
- Epoxy resin worksurfaces and sinks
- Stainless steel furniture



A Leader in Lab Equipment

NuAire contributes the key airflow equipment to protect lab environments, personnel, and processes.



A Leader in Lab Furniture

Kewaunee contributes the key furnishings to create productive laboratory environments for science.

A PORTFOLIO OF EQUIPMENT FOR LABORATORY COLD STORAGE



YOUR CHOICES FROM NUAIRE

UNDER COUNTER AND UPRIGHT MODELS

NuAire's portfolio of ultralow temperature freezers provides the cold storage required by many laboratories. Choose one of our models below based on your needs. Capacities shown assume purchase of the racks we offer for 2-inch (5cm) boxes / 2 ml vials and may vary with rack provider.

| Model Number | Electrical | Racks | Boxes 2" / 5 cm | Samples 2 ml Vial | Approximate Exterior Dimensions W x H x D - In. (mm) |
|--------------|------------------|-------|--------------------|----------------------|---|
| NU-99579VFT | 100-230V/50-60Hz | 16 | 400 | 40000 | 35.40 (900) x 77.96 (1980) x 38.60 (980) |
| NU-99729VFT | 100-230V/50-60Hz | 20 | 500 | 50000 | 41.18 (1046) x 77.96 (1980) x 38.60 (980) |
| NU-99829VFT | 100-230V/50-60Hz | 24 | 600 | 60000 | 45.28 (1150) x 77.96 (1980) x 38.60 (980) |
| NU-99100JGA | 115V/60Hz | 4 | 60 | 6000 | 30.32 (770) x 31.89 (810) x 25.98 (660) |
| NU-99338JGA | 115V/60Hz | 12 | 216 | 21600 | 31.97 (812) x 72.68 (1846) x 35.16 (893) |
| NU-99338JE | 230V/50Hz | 12 | 216 | 21600 | 31.97 (812) x 72.68 (1846) x 35.16 (893) |

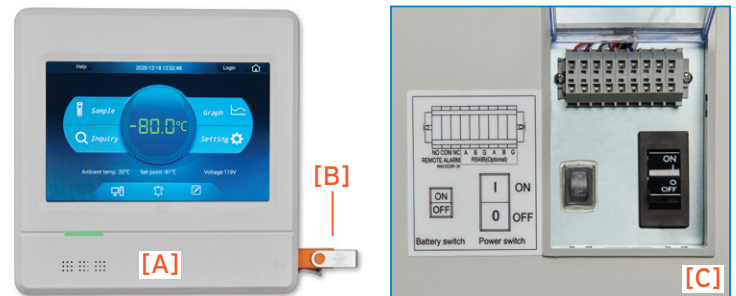


Prefer to browse the details about our freezers online?

Scan to review the product range and documentation for each model.

BLIZZARD VFT SERIES ADAPTS TO YOUR LABORATORY

Plug into an electrical supply from 100-230V, 50/60Hz and then choose high performance mode for tight temperature control or Energy Saving mode for best electrical consumption.



Easy Data Export and Monitoring

The performance of this ultra-low freezer can be easily monitored by viewing a graph on the touch screen [A], downloading data from the USB port [B], or communicate it externally via the RS-485 port [C].

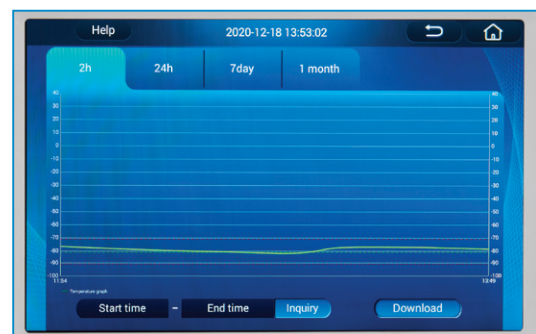
Multi-Gasketed Outer Door

Secure the cold environment of a freezer with walls and the outer door built from cold rolled steel and insulated with high-density polyurethane foam.

Four Insulated Inner Doors

A pair of doors consisting of plastic framed PS board provide access while minimizing temperature loss from opening.

HC Refrigerants



BLIZZARD NU-99579VFT UPRIGHT ULTRALOW FREEZER

Choose the VFT model that meets your storage needs and space available.



Exterior Dimensions: W x H x D In. (mm)
35.40 (900) x 77.96 (1980) x 38.60 (980)

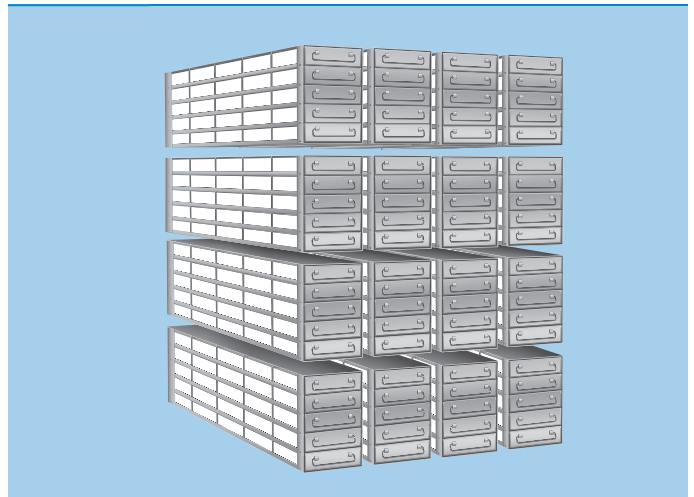
Our Smallest VFT Model

This model offers the same electrical flexibility, choice of running modes, four inner door layout and user-friendly controls as the other options in the VFT range but in a size more appropriate for laboratories with limited space and more moderate storage needs of up to 40,000 2ml vials.

Racks: **16** 5 Rows x 5 Cols.

Boxes: **400** 2" (5 cm) Box

Samples: **40000** 2 mL Vial



BLIZZARD NU-99729VFT UPRIGHT ULTRALOW FREEZER

Choose the VFT model that meets your storage needs and space available.



Exterior Dimensions: W x H x D In. (mm)
41.18 (1046) x 77.96 (1980) x 38.60 (980)

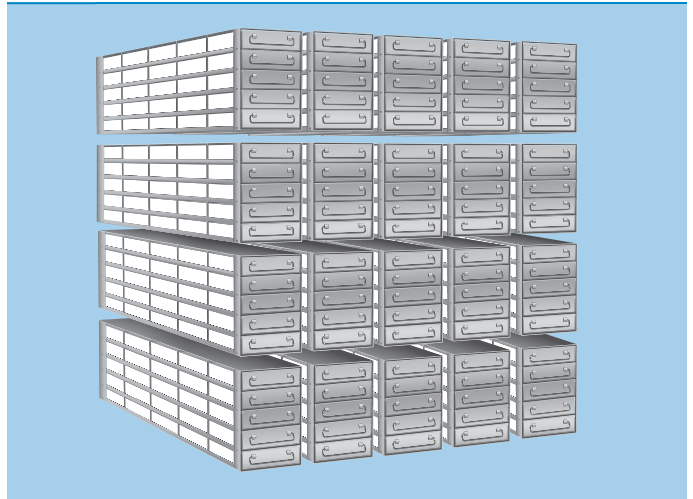
Our Intermediate VFT Model

This model increases the storage capacity to a size that meets the larger storage needs of laboratories that have the need and floorspace available to store up to 50,000 2ml vials.

Racks: **20** 5 Rows x 5 Cols.

Boxes: **500** 2" (5 cm) Box

Samples: **50000** 2 mL Vial



Scan for more information

BLIZZARD NU-99829VFT UPRIGHT ULTRALOW FREEZER

Choose the VFT model that meets your storage needs and space available.



Exterior Dimensions: W x H x D In. (mm)
45.28 (1150) (1145) x 77.96 (1980) x 38.60 (980)

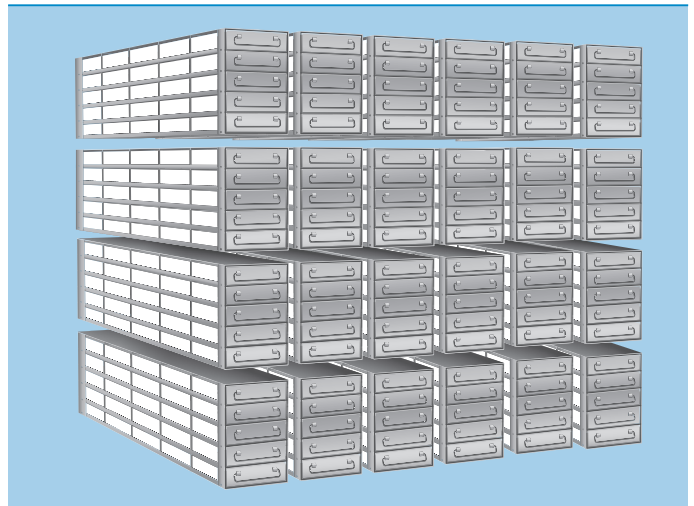
Our Largest VFT Model

This model is our largest capacity VFT model that can meet the storage needs of laboratories that have the need and floorspace available to store up to 60,000 2ml vials.

Racks: **24** 5 Rows x 5 Cols.

Boxes: **600** 2" (5 cm) Box

Samples: **60000** 2 mL Vial



BLIZZARD NU-99100JGA UPRIGHT ULTRALOW FREEZER

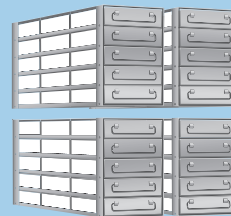
A compact footprint for space-constrained labs with modest storage needs



Racks: **4** 5 Rows x 3 Cols.

Boxes: **60** 2" (5 cm) Box

Samples: **6000** 2 mL Vial



Exterior Dimensions: W x H x D In. (mm)
30.32 (770) x 31.89 (810) x 25.98 (660)

Multi-Gasketed Outer Door [A]

Protect samples inside the cold air environment of a freezer whose enclosure, inner wall and outer door are made of pure-polyester baking finish coated steel plate and whose insulation uses VIP and polyurethane foam.

HC Refrigerants

RS-485 Port

Send data to your freezer monitoring software.

Stainless Steel Inner Doors [B]

Two inner doors and an inner shelf help keep access to your samples organized.



Electronic Control System

Easily input setpoints or download historical data to a USB drive.



Scan for more information

BLIZZARD NU-99338JGA / JE SMALL UPRIGHT FREEZER

A comfortable size for laboratories needing compact, efficient cold storage.



Racks: **12** 6: 4 Rows x 4 Cols.
6: 5 Rows x 4 Cols.

Boxes: **216** 2" (5 cm) Box

Samples: **21600** 2 mL Vial



Exterior Dimensions: W x H x D In. (mm)
31.97 (812) x 72.68 (1846) x 35.16 (893)

Multi-Gasketed Outer Door

Secure the cold environment of a freezer whose walls and outer door use coated cold rolled steel and whose insulation is vacuum insulated with polyurethane foam.

Two Insulated Inner Doors

A pair of doors consisting of aluminum framed PS board provide access while guarding temperature.

R290 / R170 Refrigerants

USB and RS-232 / RS-485 Ports

Download historical data to a USB drive or communicate it externally for monitoring.



Scan for more information



ABOUT NUAIRE

Since 1971, NuAire has been committed to bringing the highest-quality, most dependable laboratory products to the market. We are universally recognized as one of the world's leading providers of reliable equipment for the most demanding environments.



NuAire, Inc. | [NUAIRE.COM](https://www.nuaire.com)