

Anaerobic Chambers

by PLAS ■ LABS[®]

Serving the Scientific
Community since

1967!



857-OTA, "Go Anaerobic"

CONCEPTION ■ INTERPRETATION ■ PRODUCTION ■ SATISFACTION



857-OTA, “One Touch / Go Anaerobic”

Completely automatic “One Touch” anaerobic chamber with touch screen display.



Oxygen Range: **5-7 ppm**

Temperature Range: **ambient to 41.0° C**

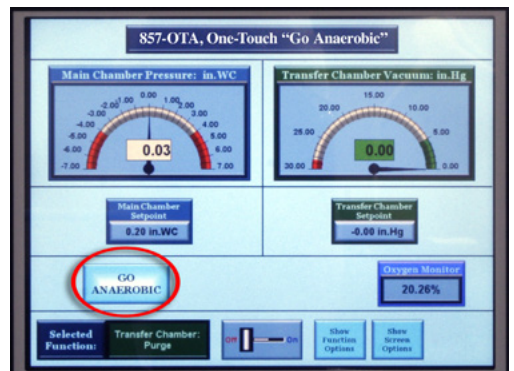
Features:

Touch Screen Control (857-OTA only)

- Large, color, easy-to-use.
- “Go Anaerobic” button to initiate purging sequence.
- On-screen, 24-hour data-logging to monitor oxygen and pressure levels.
- Selection of main chamber or transfer chamber purging.
- Automatic pressure hold functions.
- Oxygen display in percentage (%) and parts-per-million (ppm).
- Gas selection: Anaerobic gas or inert gas.
- Password protection.

857-Series Specifications

- Oxygen Sensor accuracy (%): 0-100.0% ±1.0%
- Oxygen Sensor accuracy (ppm): 0-10,000 ±1.0% FS
- Temperature range: ambient to 41.0° C
accuracy: (±0.5°)
- Pressure range: -3” WC to +3” WC
(-1500 Pa to +1500 Pa)
- Gas consumption for anaerobic achievement: 300 liters



Oxygen Range: 5-7 ppm

Temperature Range: ambient to 41.0° C

855-AC, Manually Operated Anaerobic Chamber

Completely sealed, manually operated anaerobic chamber featuring the same quality performance as the 857-OTA.



855-AC, Manually Operated, Multiple User Anaerobic Chamber

PLAS ■ LABS' Anaerobic Chambers Include:

- Two-year warranty.
- Programmable catalyst heater with palladium canister. Range: Ambient to 41.0°C.
- Drying train system for moisture reductions and oxygen reduction.
- White, ambidextrous, Hypalon material gloves.
- Optically clear one-piece top, and bright white one-piece bottom with rounded corners.
- Completely sealed for lower gas consumption: < 300 liters need for anaerobic achievement.
- Durable, rigid construction provides lower gas permeation.
- Bright Light system.
- Electrical outlet strip.
- Easy set-up, no installation.
- Two vacuum pumps; one for purging and one for drying train system operation.
- Key cock valves for optional manual purging.
- Easy gas connections with serrated valves.

Models:	Operation	Users (Gloves)	Main Chamber Dimensions	Outside Dimensions (Includes transfer chamber)
857-OTA	Automatic	Single User (2 gloves)	41" w x 28" d x 26" h	55" w x 35" d x 38" h
855-AC	Manual	Single User (2 gloves)	41" w x 28" d x 26" h	55" w x 35" d x 38" h
855-ACB	Manual	Multiple User (4 gloves)	60" w x 38" d x 31" h	76" w x 47" d x 42" h

Customization is also available!



856-HYPO, Hypoxia Chamber

Completely automatic Hypoxia Chamber, provides automatic control and monitoring of O₂, CO₂, and temperature.

Features:

- Large, 8" color, easy-to-use "Touch Screen".
- O₂ and CO₂ sensors.
- On-screen, 24-hour data-logging to monitor oxygen, CO₂, and temperature ranges.
- Inert gas hook-up.
- Air circulation fan.
- Large, 8" color, easy-to-use "Touch Screen".
- O₂ and CO₂ sensors.
- Password protection.
- Inert gas hook-up.
- Ethernet hook-up.

Specifications:

Oxygen (O₂) range: 0-25%
 Oxygen sensor accuracy: ± 0.25%
 Carbon Dioxide (CO₂) range: ± 0-20%CO₂
 Carbon Dioxide sensor accuracy: ± 0.2%
 Temperature range: ambient to 40° C
 Temperature accuracy: ± 0.3° C @ 0° C
 (class "B" accuracy)

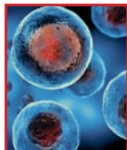


Models:	Operation	Users (Gloves)	Main Chamber Dimensions	Outside Dimensions (includes transfer chamber)
856-HYPO	Automatic	Single User (2 gloves)	41" w x 28" d x 26" h	55" w x 35" d x 38" h

Applications



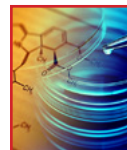
Chemistry



Stem Cell Research



Clinical



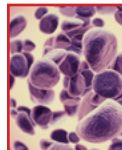
Microbiology



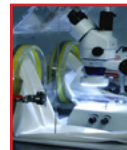
Cell Biology



Clostridium difficile



Cancer Cell Research



Life Science