



LYNX

Bottle Fillers

Model 100BF

Efficient and precise bottle filling

The LYNX Model 100BF (formerly Scientek SWBF-25) Feeder Bottle Filler is a manifold type filler designed for filling basket loads of feeder bottles used in the care of laboratory animals. LYNX Bottle Fillers provide uniform water delivery using either manual or automatic controls. Units are designed to accept common bottle basket configurations (24, 25 or 36 position). All LYNX Bottle Fillers are designed for ease of cleaning, low maintenance, and long life.

Standard Features

- Slide Rail Loading
- Adjustable Height Manifold
- Manual Fill Valve
- Interchangeable Header
- Adjustable Leveling Feet
- Lower Basket Storage
- Uniform Volume Nozzles

Spire at your side

Construction

LYNX 100BF Bottle Fillers are constructed of a sturdy 304 stainless steel tubular design. Filler comes equipped with four leveling legs and a quick disconnect filler manifold. The individual stainless steel spray jets are positioned to fill bottles of various type and configurations. Additional optional headers available.

Optional Features

- Automatic Operations with AutoFill Valve
- Roller Table Loading (*in lieu of slide rails*)
- DI or RO Water Supply
- Acid Proportioner
- pH Monitoring System
- Double Wide (*dual filling manifolds*)
- Seismic Tie Downs
- 316L Stainless Steel Construction

Accessories

- Additional Fill Header
- Bottle Basket Transfer Cart
- Bottle Baskets

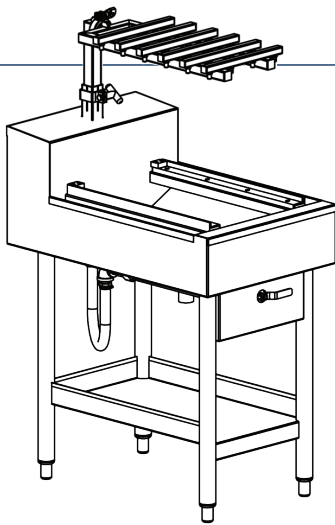
Utilities

Electrical (E)*	Required if Auto Fill Packaged ordered. 120VAC
Water (W)	1" NPT, 35 PSI, $\pm 5^\circ$ F
Drain	1½" Connection

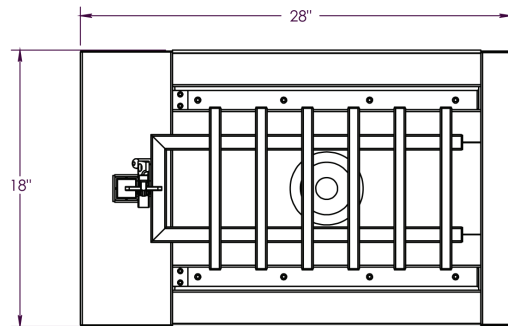
Model	Standard Dimensions W x H x D	Standard Load Length
100BF ¹	18" x 44" x 28"	22"

1) 100BF (formerly SCIENTEK SWBF-25)

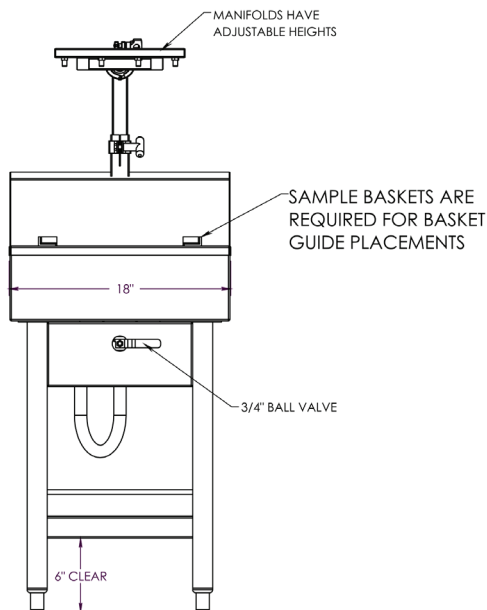
Representative Drawing



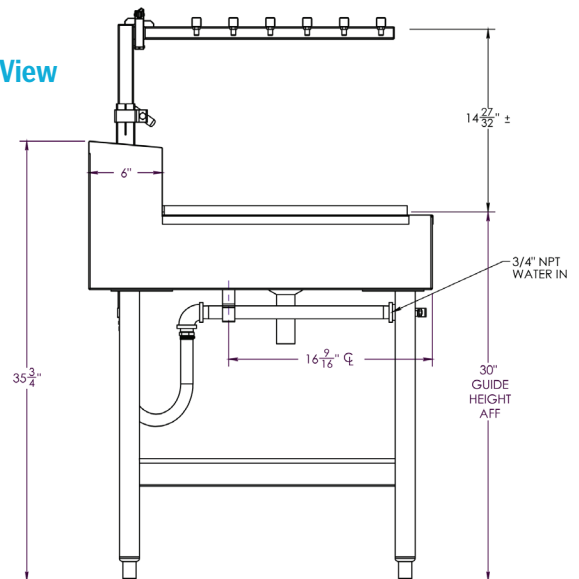
Top View



Front View



Side View

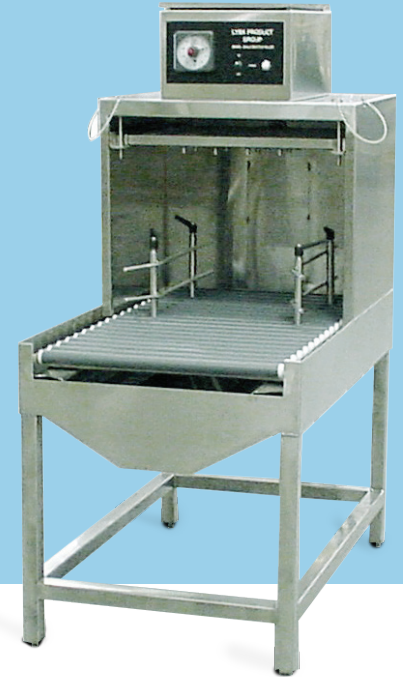


100BF Bottle Filler Sell Sheet_M1049_1.00 2021-0326

LYNX

Bottle Fillers

Model 100LX



Efficient and precise bottle filling

The LYNX Model 100LX Feeder Bottle Filler is a manifold type filler designed for filling basket loads of feeder bottles used in the care of laboratory animals. LYNX Bottle Fillers provide uniform water delivery using either manual or automatic controls. Units are designed to accept common bottle basket configurations (24, 25 or 36 position). All LYNX Bottle Fillers are designed for ease of cleaning, low maintenance, and long life.

Standard Features

- Slide Rail Loading
- Adjustable Basket Guides
- Manual Fill Valve
- Interchangeable Header
- Adjustable Leveling Feet
- Integrated Stainless Steel Backsplash
- Uniform Volume Nozzles

Spire at your side

Construction

LYNX 100LX Bottle Fillers are constructed of a sturdy 304 stainless steel tubular design. Filler comes equipped with four leveling legs, an integral stainless steel splash hood, and quick disconnect filler manifold. The individual stainless steel spray jets are positioned to fill bottles of various type and configurations. Additional optional headers available.

Optional Features

- Automatic Operations with AutoFill Valve
- Roller Table Loading (*in lieu of slide rails*)
- DI or RO Water Supply
- Acid Proportioner
- pH Monitoring System
- pH Printer
- Seismic Tie Downs
- 316L Stainless Steel Construction

Accessories

- Additional Fill Header
- Bottle Basket Transfer Cart
- Bottle Baskets

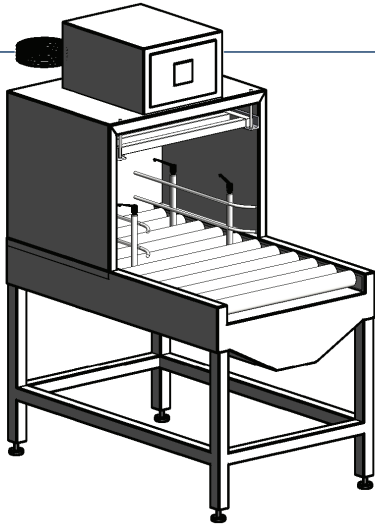
Utilities

Electrical (E)*	Required if Auto Fill option ordered. 120VAC
Water (W)	1" NPT, 35 PSI, ± 5° F
Drain	1½" Connection

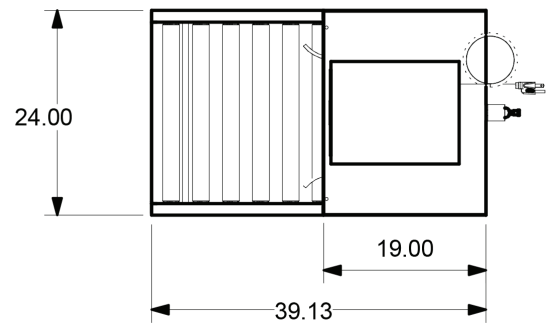
Model	Standard Dimensions W x H x D	Standard Load Length
100LX	24" x 48"* x 41"	38"

*53.5" High with automatic operations control panel.
 Filler can be designed to any basket size or configuration to meet new or existing applications.

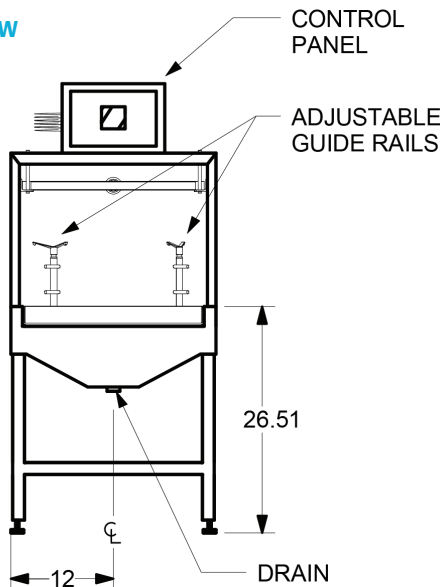
Representative Drawing



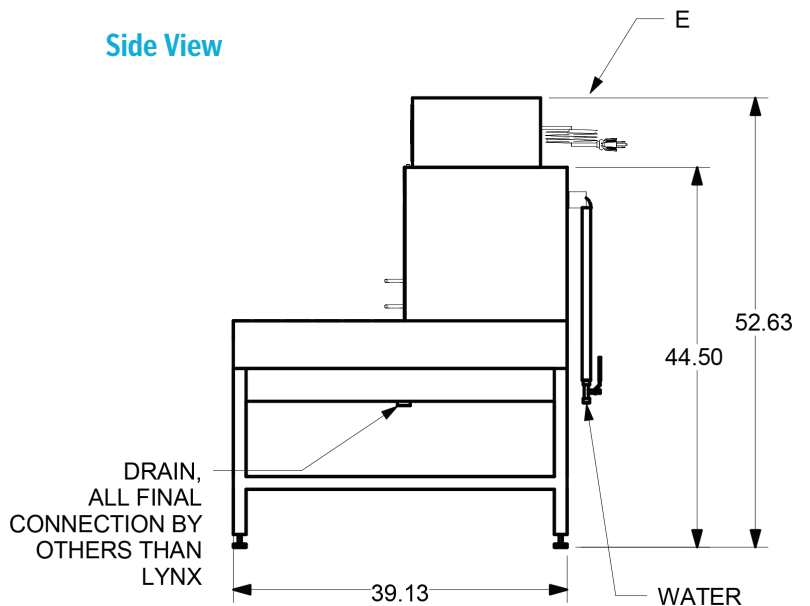
Top View



Front View



Side View



100LX Bottle Filler Sell Sheet_M1046_1.00 2021-0326

LYNX

Bottle Fillers

Model 110BF



Efficient and precise bottle filling

The LYNX Model 110BF (formerly Scientek SWBF-36) Feeder Bottle Filler is an in-line, manifold type filler designed for filling basket loads of feeder bottles used in the care of laboratory animals. LYNX Bottle Fillers provide uniform water delivery using either manual or automatic controls. Units are designed to accept common bottle basket configurations (24, 25 or 36 position). All LYNX Bottle Fillers are designed for ease of cleaning, low maintenance, and long life.

Standard Features

- Slide Rail Loading
- Adjustable Height Manifold
- Manual Fill Valve
- Interchangeable Header
- Adjustable Leveling Feet
- Lower Basket Storage
- Uniform Volume Nozzles

Spire at your side

Construction

LYNX 110BF Bottle Fillers are constructed of a sturdy 304 stainless steel tubular design. Filler comes equipped with four leveling legs and quick disconnect filler manifold. The individual stainless steel spray jets are positioned to fill bottles of various type and configurations. Additional optional headers or dual header arrangement available.

Optional Features

- Automatic Operations with AutoFill Valve
- Roller Table Loading (*in lieu of slide rails*)
- DI or RO Water Supply
- Acid Proportioner
- pH Monitoring System
- Seismic Tie Downs
- 316L Stainless Steel Construction
- Extended Load Lengths

Accessories

- Additional Fill Header
- Bottle Basket Transfer Cart
- Bottle Baskets

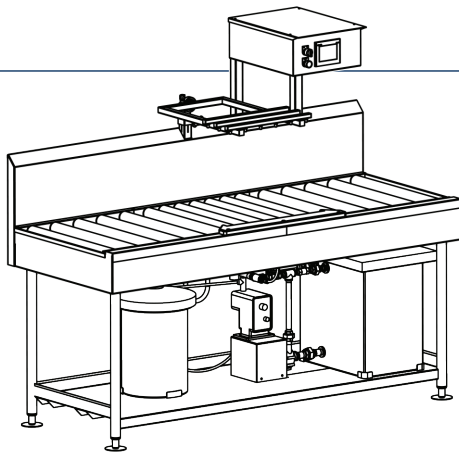
Utilities

Electrical (E)*	Required if Auto Fill Packaged ordered. 120VAC
Water (W)	1" NPT, 35 PSI, ± 5° F
Drain	1½" Connection

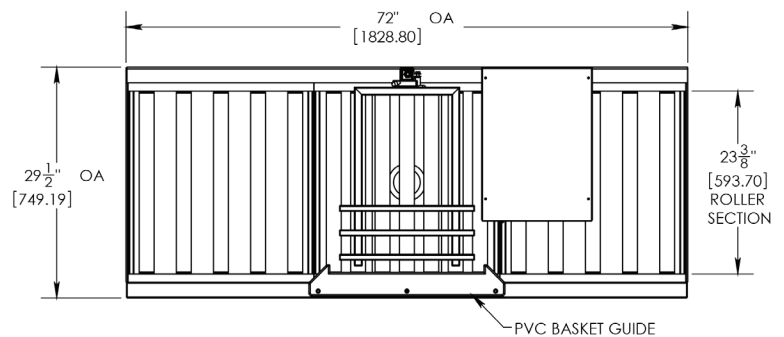
Model	Standard Dimensions W x H x D	Standard Load Length	Available Load Lengths
110BF ¹	72" x 34" x 29"	23"	48", 56", 96"

1) 110BF (formerly SCIENTEK SWBF-36)

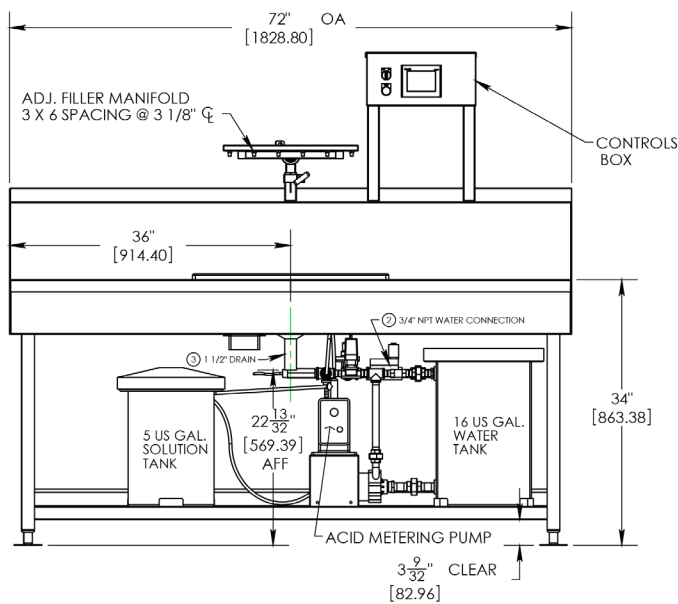
Representative Drawing



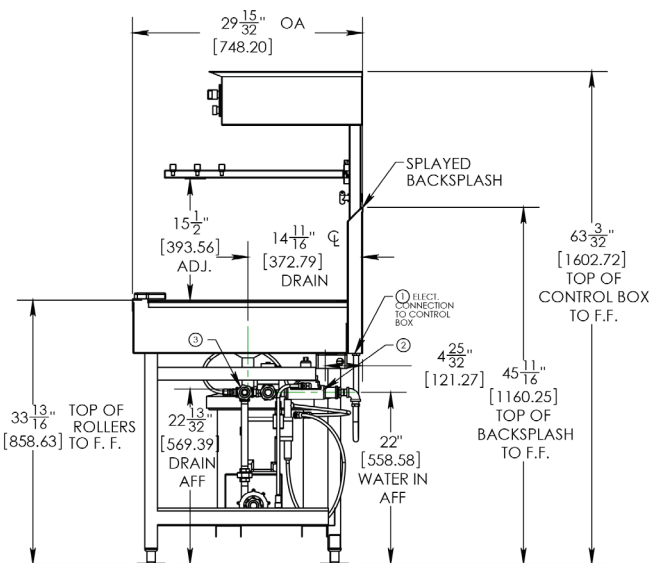
Top View



Front View



Side View



110BF Bottle Filler Sell Sheet_M1050_1.00 2021-0326

LYNX

Bottle Fillers

Model 110LX



Efficient and precise bottle filling

The LYNX Model 110LX Feeder Bottle Filler is a manifold type filler designed for filling basket loads of feeder bottles used in the care of laboratory animals. LYNX Bottle Fillers provide uniform water delivery using either manual or automatic controls. Units are designed to accept common bottle basket configurations (24, 25 or 36 position). This unit is available with a single or double header filling operation. All LYNX Bottle Fillers are designed for ease of cleaning, low maintenance, and long life.

Standard Features

- Track Slide Rails
- Fixed Basket Guide
- Manual Fill Valve
- Interchangeable Header
- Adjustable Leveling Feet
- Integrated Stainless Steel Backsplash

Spire at your side

Construction

LYNX 110LX Bottle Fillers are constructed of a sturdy 304 stainless steel tubular design. Fillers come equipped with eight leveling legs, an integral stainless steel backsplash, and quick disconnect filler manifold. The individual stainless steel spray jets are positioned to fill bottles of various types and configurations. Additional optional headers or dual header arrangement available.

Optional Features

- Automatic Operations with AutoFill Valve
- Roller Table Loading (*in lieu of slide rails*)
- DI or RO Water Supply
- Acid Proportioner
- pH Monitoring System
- pH Printer
- Seismic Tie Downs
- 316L Stainless Steel Construction
- Dual Head Filling
- Extended Load Lengths

Accessories

- Additional Fill Header
- Bottle Basket Transfer Cart
- Bottle Baskets

Utilities

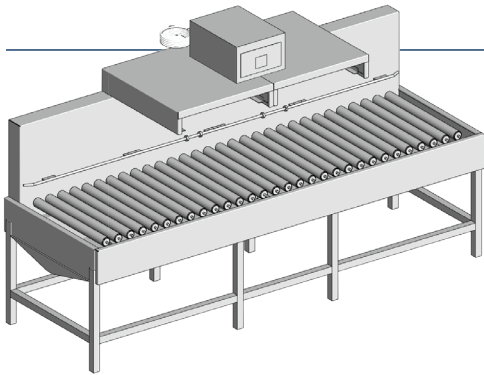
Electrical (E)*	<i>Required if Auto Fill option ordered.</i> 120VAC
Water (W)	1" NPT, 35 PSI, ± 5° F
Drain	1½" Connection

Model	Standard Dimensions W x H x D	Standard Load Length	Opt. Load Lengths
110LX	72" x 58"* x 32"	72"	48", 96"

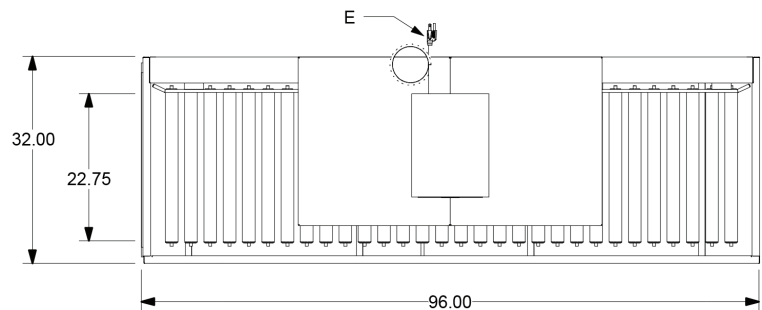
**Dimensions may change with selected options.*

Filler can be designed to any basket size or configuration to meet new or existing applications.

Representative Drawing



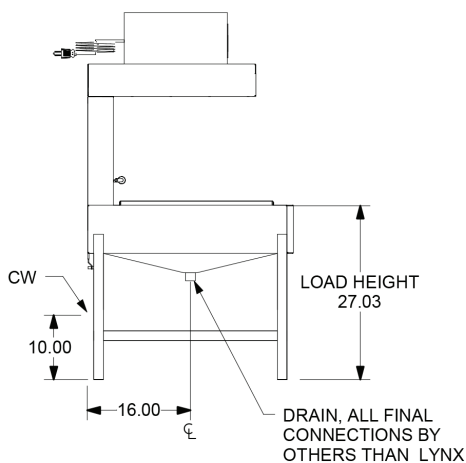
Top View



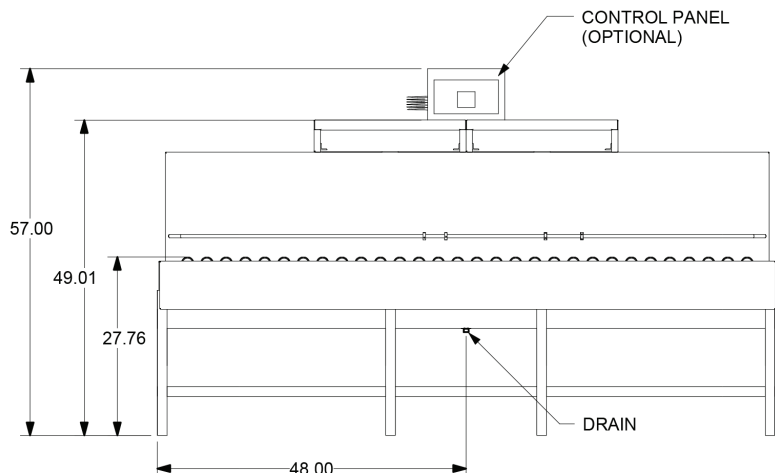
REPRESENTED WITH DUAL HEADER (OPTIONAL)

REPRESENTED AS 96" LONG - OPTIONAL LENGTHS AVAILABLE

Front View



Side View



110LX Bottle Filler Sell Sheet_M1047_1.00 2021-0326

LYNX

Bottle Fillers

Model 170LX



Efficient and precise bottle filling

The LYNX Model 170LX Feeder Bottle Filler is a space-saver, wall mounted, manifold type filler designed for filling basket loads of feeder bottles used in the care of laboratory animals. LYNX Bottle Fillers provide uniform water delivery using either manual or automatic controls. Units are designed to accept common bottle basket configurations (24, 25 or 36 position). All LYNX Bottle Fillers are designed for ease of cleaning, low maintenance, and long life.

Standard Features

- Wall Mounted
- Automatic Fill Valve
- Interchangeable Header
- Individual Stainless Steel Spray Jets
- Drop-down Header
- Basket Transfer Cart

Spire at your side

Construction

LYNX 170LX Bottle Fillers have all 304 stainless steel construction including piping and components. Units provide individual stainless steel spray jets for more precise filling. Fill header is fitted with gas-filled springs for gentle raising and lowering of the header.

Optional Features

- Selectable Bottle Types
- DI or RO Water Supply
- Acid Proportioner
- pH Monitoring System
- pH Strip Chart Recorder
- 316L Stainless Steel Construction

Accessories

- Additional Fill Header
- Bottle Baskets

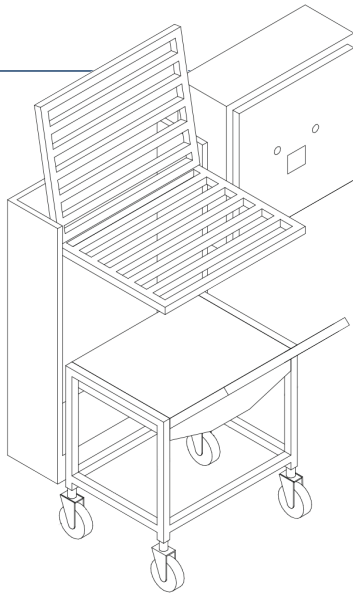
Utilities

Electrical (E)*	<i>Required if Auto Fill Packaged ordered.</i> 120VAC
Water (W)	1" NPT, 35 PSI, $\pm 5^\circ$ F
Drain	1½" Connection

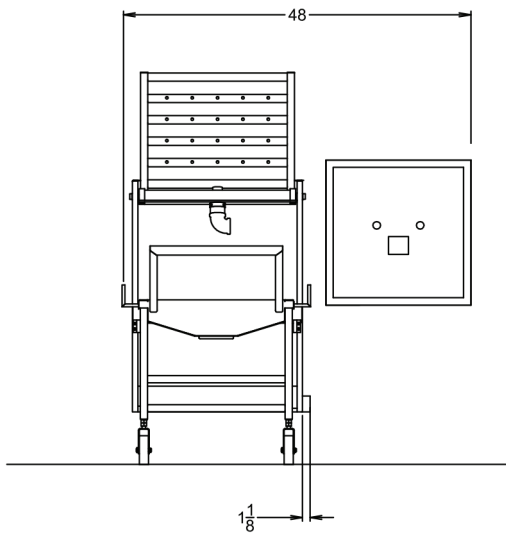
Model	Standard Dimensions W x H x D	Standard Dimensions W x H x D
170LX	<i>No cart/header up:</i> 26" x 54" x 9.75"	<i>Cart/header down:</i> 26" x 42" x 32.13"

Filler can be designed to any basket size or configuration to meet new or existing applications.

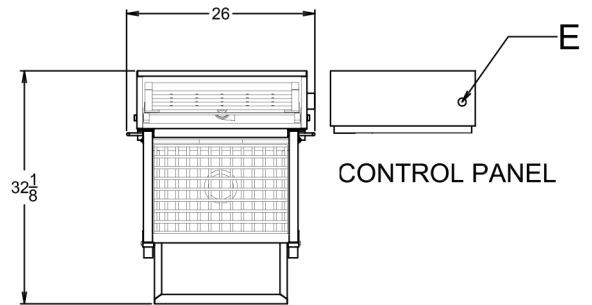
Representative Drawing



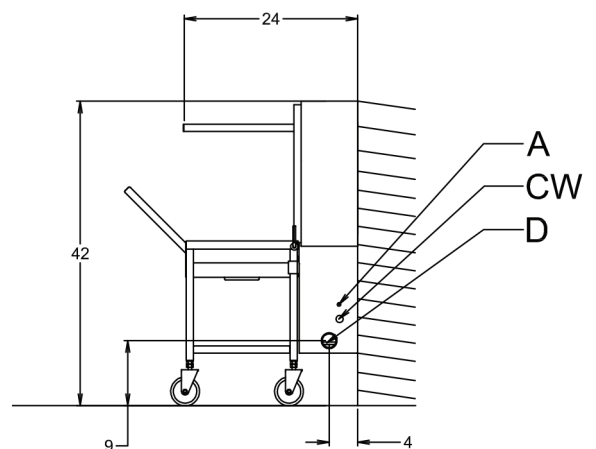
Front View



Top View



Side View



170LX Bottle Filler Sell Sheet_M1048_1.00 2021-0326