

NOR-LAKE[®] SCIENTIFIC

PREMIER[™] GLASS DOOR LABORATORY AND PHARMACY REFRIGERATORS

Designed to meet the demanding requirements for scientific and laboratory research. Advanced engineered design incorporates the latest in cabinet, refrigeration, temperature control and monitoring features. Provides energy efficient, convenient, safe and reliable performance for optimal storage temperature environments necessary for a wide range of life science, pharmacy, biological, medical, clinical, and industrial applications.

Standard Product Features:

- Digital LED display microprocessor temperature controller
- Audible and visual Hi/Lo temperature alarm
- Adjustable control range from +2°C to +10°C; factory preset at +4°C
- Remote alarm contacts
- Continuous product temperature display
- Product sensor with glycerin bottle
- Power supply switch
- Exterior cabinet front, sides and back are painted white
- Exterior cabinet top and bottom are galvanized steel
- Interior cabinet liner is painted white
- Cabinet is foamed-in-place with CFC-free high density polyurethane foam insulation
- Full length double pane, argon filled reflective, self-closing glass door(s) with torque master hinge and white finish
- Heavy duty door pivot hinges
- Full length pull door handles
- Magnetic door gaskets
- Key door lock(s) (2 keys)
- Four casters (2 locking) on one and two door models, six casters (3 locking) on three door models
- 3 coated wire shelves per door section
- Interior LED light, switch activated
- Air cooled condensing unit
- Top mounted forced air refrigeration system
- Automatic defrost and condensate evaporation
- Warranties: 18 month parts and labor, 5 year compressor (US and Canada) 18 months parts (International)
- UL, C-UL listed

Optional Features:

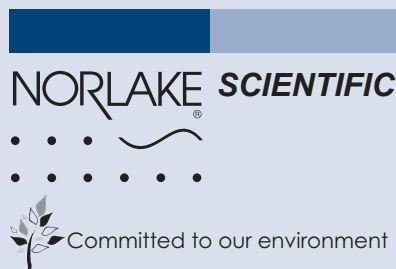
- Extra shelf
- Stainless steel drawer (8 maximum)
- Wire basket drawer (8 maximum)
- Access port 2" sleeve with cover
- Sensor access port 1" diameter
- Internal electrical outlet
- Legs in lieu of casters
- Stainless steel interior
- Stainless steel exterior
- Reverse door hinge
- Temperature chart recorder with chart paper
- 4-20ma output
- Export crating



NSPR331WWG/

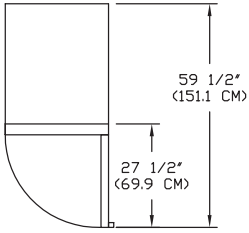


NSPR241WWG/ NSPR331WWG/ NSPR522WWG/ NSPR803WWG/

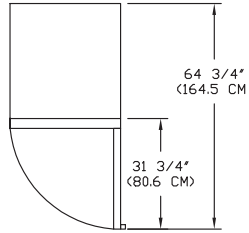


Nor-Lake, Inc.
Registered to ISO 9001:2008
File No. 10001816

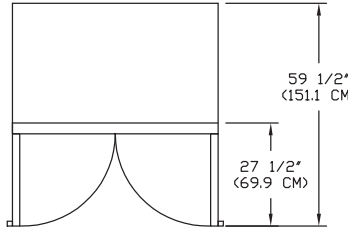
NOR-LAKE SCIENTIFIC
A Division of
NOR-LAKE, INCORPORATED
727 Second Street
Hudson, Wisconsin 54016
800-477-5253
715-386-2323
800-388-5253 PARTS
715-386-4290 FAX
www.norlakescientific.com



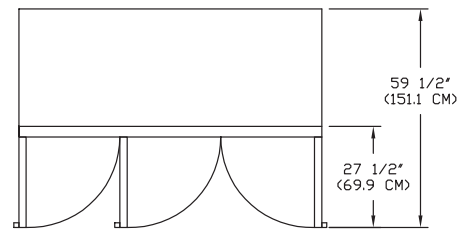
NSPR241WWG/



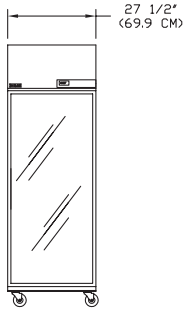
NSPR331WWG/



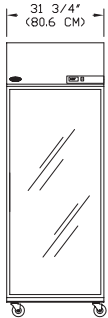
NSPR522WWG/



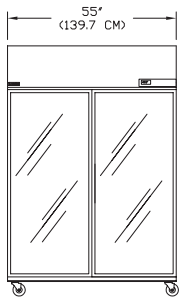
NSPR803WWG/



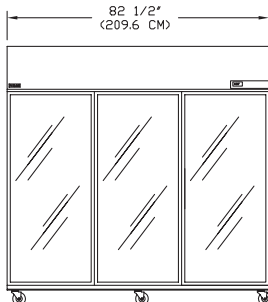
NSPR241WWG/



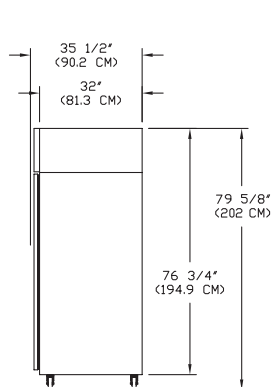
NSPR331WWG/



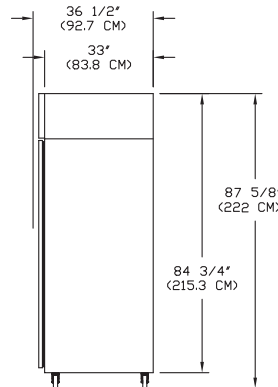
NSPR522WWG/



NSPR803WWG/



**SIDE VIEW
NSPR241, 522 & 803**



**SIDE VIEW
NSPR331**

SPECIFICATIONS

Models	NSPR241WWG/0	NSPR331WWG/0	NSPR522WWG/0	NSPR803WWG/0
	NSPR241WWG/5	NSPR331WWG/5	NSPR522WWG/5	NSPR803WWG/5
Crated Weight (lbs) (kg)	351 (159)	439 (199)	590 (267)	750 (340)
Crated Height (in) (cm)	83 (211)	91 (231)	83 (211)	83 (211)
Crated Width (in) (cm)	31-7/8 (81)	36-1/4 (92)	59 (150)	86-1/2 (220)
Crated Depth (in) (cm)	38-7/8 (99)	39-7/8 (101)	38-7/8 (99)	38-7/8 (99)
Interior Height (in) (cm)	59 (150)	67 (170)	59 (150)	59 (150)
Interior Width (in) (cm)	23-1/2 (59)	27-3/4 (70)	51 (129)	78-1/2 (199)
Interior Depth (in) (cm)	30 (76)	31 (79)	30 (76)	30 (76)
Overall Height (in) (cm)	79-5/8 (202)	87-5/8 (223)	79-5/8 (202)	79-5/8 (202)
Overall Width (in) (cm)	27-1/2 (70)	31-3/4 (81)	55 (140)	82-1/2 (210)
Overall Depth (in) (cm)	35-1/2 (90)	36-1/2 (93)	35-1/2 (90)	35-1/2 (90)
Gross Cubage (CuFt) (L)	24.0 (680)	33.1 (937)	52.0 (1472)	80.0 (2265)
Number of Shelves	3	3	6	9
Shelf Area (SqFt) (Sqm)	12.83 (1.2)	15.85 (1.5)	28.6 (2.7)	42.84 (4.0)
Number of Casters	4	4	4	6
Condensing Unit Size	1/3 HP	1/3 HP	1/2 HP	3/4 HP
Refrigerant	R-134a	R-134a	R-134a	R-134a
Total Amp Draw /0	8.6	8.6	10.7	10.4
Total Amp Draw /5	3.2	3.2	4.2	8.1

Specifications subject to change without notice.

Voltage Model Suffix Code	Voltage Description	NEMA Plug	NEMA Receptacle
/0	115V, 1PH, 60HZ	5-15P	5-15R
/5	230V, 1PH, 50HZ	Power Inlet (IEC 60320) Module	Cord Supplied Locally



NORLAKE SCIENTIFIC

Revision Date: 10/14
©2014 NOR-LAKE, INC.
Printed in the U.S.A.
Part Number: 073285

