

SenseAnywhere

for Ultra-Low Chamber Monitoring

1. Insert probe into freezer.



2. Set up AccessPoint.



Plug in Ethernet cable



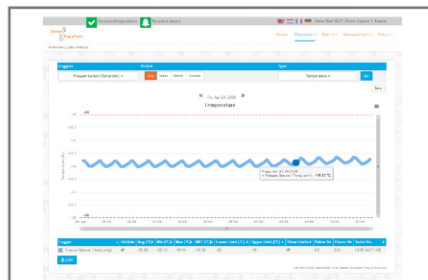
Plug in power cord



AccessPoint is ready!

3. Log in to your SenseAnywhere Dashboard from your desktop or mobile device.

You're done!



Ultra-low temperature monitoring made easy

A SenseAnywhere monitoring system is the industry solution for ultra-low temperature freezer monitoring to temperatures as low as -200°C .

- -80°C ultra-low, -20°C , and LN_2 freezers
- Easy data access from your PC or smartphone
- Simple, user-friendly interface
- Great for monitoring all lab equipment and areas -200°C to $+200^{\circ}\text{C}$
- Operates using 915 MHz radio frequency instead of WiFi

Scan here for an interactive demo of the SenseAnywhere interface:

