

HISTOFLOW

HISTOLOGY WORKSTATION

REPRESENTED BY:

 **BCASCIENTIFIC**
INCORPORATED
3395 Brett Road, Mississauga, ON, L5L 4N7
www.BCAscientific.com
Phone:905-820-6125 / Fax:905*820*8958

MODEL HWS-51FE

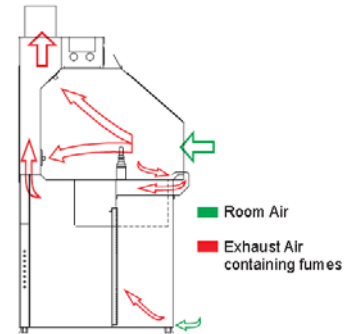


This 5 foot wide all stainless steel fume hood is specially designed for histology work from a sitting position. Adjustable legs allow it to be fixed at a wide range of heights. To positively control formaldehyde fumes this cabinet has a full wide front lip vent, two adjustable rear rents and a fully vented base cabinet.

Other features include a self-contained formalin dispensing and waste collection system with level indication and a hinged tempered glass window for full access to the work area.

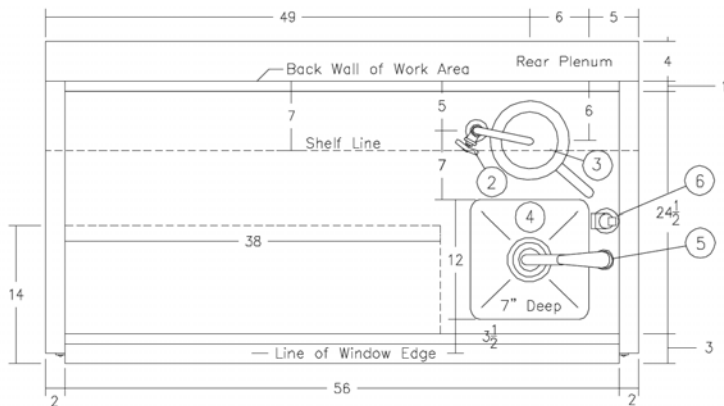
Formalin On Demand! Formalin is pumped directly from a standard 20 litre bulk pack in the cabinet base to the central gooseneck dispenser. The lip vented chemical sink drains into a collection container also located in the cabinet base. Both waste and supply containers have level sensing to signal when they are nearly full or empty.

Positive Fume Control! Minimizing occupational exposure to formaldehyde fumes is becoming more of a concern. The HWS-51FE addresses this concern with exceptional fume containment. The full width front lip vent draws fumes away from the front work area before they can escape out the front in turbulent air. The adjustable top and bottom rear baffles fully exhaust the rest of the work space. The fully vented base cabinet prevents the build up of fumes from storage containers. Disposal of liquid waste with the chemical sink is inside the cabinet where fumes are fully exhausted.



Accommodating! This model features generous knee clearance for sitting and adjustable legs that can be set manually for a work surface height of 29 to 36 inches.

Dimensions and Features:



SERVICES:

May Require Flexible Connections and Allowance for Height Adjustment

Electrical
120VAC 1PH 12A (with outlet)

Plumbing
- Hot & Cold 1/2"
- Drain 1 1/2"

Exhaust
- 600 CFM @ 1/4"SP (at exhaust duct)

NOTES:

1. GFI Duplex Outlet with Cover, switched at control panel.
2. Formalin Dispenser T&S BL-5850-02 self closing with swivel gooseneck.
3. Formalin Sink, lip vented, with removable funnel strainer, drains to 20 litre waste formalin collection container.
4. SS Sink 12"x12"x 7" deep, all covered corner with basket strainer.
5. Deck Mounted, Single lever Mixing Faucet.
6. Pull Out Hose Spray

All Stainless Steel Construction, with 316 14 ga Worksurface, TIG welded, ground and polished to No. 4 satin finish.

